



Alexandre Boyes



Limetree House, Corseley Road, Groombridge, TN3 9SF

01892 354080
www.alexandre-boyes.co.uk

Entrance Hall, Cloakroom, Study, Kitchen/Breakfast Room open to Sitting Room, Five Bedrooms, Three Bathrooms, Open Garage, Parking, Garden. No Chain.

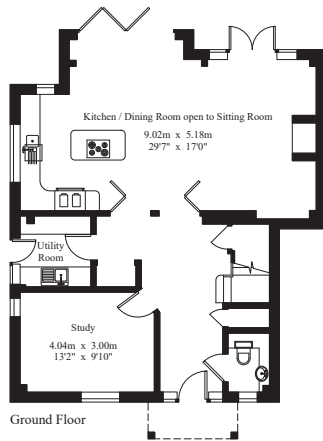
A beautifully presented five bedroom semi detached family house within walking distance of Groombridge school located in this highly sought after village. Viewing highly recommended.

Groombridge still retains many of the amenities one would hope to find such as the Post Office, Baker, Convenience Store, Two Public Houses, Doctor's Surgery and St Thomas's Primary School. Tunbridge Wells town offers excellent facilities including the Royal Victoria shopping centre and the famous Pantiles. The mainline railway station offers services to London in under one hour. There are a variety of schools including Primary, Secondary and Private Schools, most of which have achieved excellent reports from Ofsted.

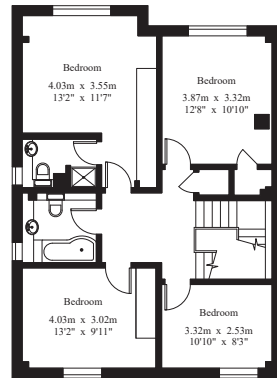


Limetree House

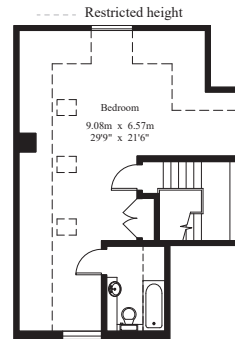
Gross Internal Area : 213.7 sq.m (2,300 sq.ft.)
(Excluding Garage)



Ground Floor



First Floor



Second Floor

FOR IDENTIFICATION PURPOSES ONLY
©2022 Trueplan (UK) Ltd. 01892 614 881

A copy of the full Energy Performance Certificate is available on request.

Score	Energy Rating	Current	Potential
92+	A		
81-91	B		
69-80	C		
55-68	D		
39-54	E		
21-38	F		
1-20	G		
		77 C	83 B

IMPORTANT NOTES

1. Every care has been taken in the preparation of these particulars but their accuracy is not guaranteed and they do not form part of any contract. Descriptions are given in good faith and as an opinion of the Agents - not as a statement of fact. 2. Measurements are approximate and any reference to any particular use of any part of the property or to alterations is not intended to imply that planning or building regulations or other consents have been obtained. 3. We have not tested any appliances, services, heating systems, fixtures or fittings and so cannot guarantee they are in good working order. Prospective purchasers should undertake their own tests, enquiries or surveys before entering into any commitment. Photographs are reproduced for general information and it must not be inferred that any item shown is included in the sale. 4. These particulars are issued on the understanding that all viewings and negotiations are conducted through the Agents.

